

Webinar on
Critical role of cold chain in
preservation of Covid-19
vaccines.



Single Floor Cold Storage Facility



Pharma Compliant WHO GDP approved cold storage facility. 17,500 Pallets



Operations Reports

- ❶ ERP Inventory System
- ❶ Periodical Stock Auditing
- ❶ Truck Turn Around Time (TAT) Report
- ❶ High Standards in Safety and Hygiene
- ❶ FIFO, FEFO, Batch wise, Pallet wise, Memo wise
- ❶ Space utilization, Monthly Transaction, Daily Transaction
- ❶ Inventory Reports - RM, FG, WIP, Packaging Material Rejection Material Report



Technical Reports

- ❶ 21 CFR Data Loggers
- ❶ Online Temperature and RH
- ❶ Gubba App Online Temp. & RH
- ❶ Thermal Tracking
- ❶ Temperature Mapping
- ❶ Temperature & RH Control
- ❶ Mean Kinetic Temperature
- ❶ Equipment Calibration Records



Products

- ❶ API (Active Pharma Ingredient)
- ❶ Dangerous goods
- ❶ Bulk drugs
- ❶ Capsules
- ❶ Vaccines
- ❶ Vials & Syringes
- ❶ Packaging Material
- ❶ Finished Goods
- ❶ Excipients
- ❶ Product Launches



Safety of products

- ① WHO GDP certified
- ① HACCP Certified
- ① ISO Certified
- ① OHSAS Certified
- ① Periodical Audits
- ① Rodent & Pest Management

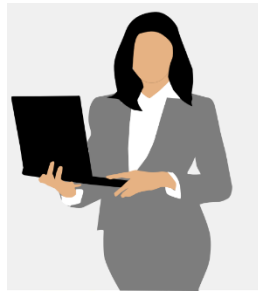


Regulatories

- ❶ Custom Bonded Warehouse for Import Cargo
- ❶ Custom Bonded Warehouse for Export Cargo by Sea / Air
- ❶ In bound & Out bound in domestic Tariff Area
- ❶ Storage solution for SEZ
- ❶ Storage solution for EOU
- ❶ Custom Clearance should be done at out bound warehouse



QUALITY CONTROL TEAM



Customer Care



HVAC & MHE
Maintenance



HSE Manager



Inventory



Rodent & Insect
Pest Controller



Refrigeration
Engineer



Quality Assurance
Head



IT & Network
Administrator

Safety

Operations Team PPE



PPE for MHE operators



Training MSDS (Material Safety Data Sheet)



Change Rooms



Rejected and Damaged dedicated space



We would like to use this platform to...

Gently remind the Government to rely on us and join hands with the private cold chain sector for preserving the covid vaccines in this hour of need... to bring PM's vision of AatmaNirbhar live.

Covid – 19 Vaccine Unanswered Questions.

- ❶ Bulk Volume when Expected for Cold Storage Preservation & Reefer Logistics Handling?
- ❷ What Temperature is Needed?
- ❸ How Many pallets Space is Needed?
- ❹ Mystery Continues

Possible Temperature Requirements for Covid -19 Vaccine.

- ❶ 2° to 8°C
- ❷ 20°to 25°C
- ❸ -20°C
- ❹ -70°C

Vaccine Preservation Challenges in Cold Storage & Reefer Logistics.

- ❶ WHO GDP Approved Cold Storage Facility.
- ❷ Dedicated Chambers for Vaccines Exclusive.
- ❸ Dedicated Reefer Transport for Vaccines Exclusive.
- ❹ Trained Man Power to handle Supply Chain & Logistics.
- ❺ Last mile Delivery is a Big Challenge.

Key Challenges

- ❶ 500 million Doses Capacity Cold Storage Facilities Needed.
- ❷ 250 Million Doses Capacity of Cold Storage Facility available in India.
- ❸ India Needs 1.7 billion Doses for Adult Population.

Covid – 19 Supply Chain Management.

- ❶ Bulk Cold Storage Facility from manufacturing to inventory hub.
- ❷ Smaller Cold Storages for secondary distributions for smaller cities.
- ❸ Plug in Reefer Containers for Towns.
- ❹ Ice Box for Villages & Last Mile Delivery.

Allied Cold Chain Infrastructure Needed

- ❶ Walk-in Cold Rooms.
- ❷ Walk-in Freezers.
- ❸ Ice Lined Refrigerators.
- ❹ Reach in Deep Freezers.
- ❺ Reach in Coolers.

Gubba Ready For Covid – 19 Vaccine Preservation.

- ❶ 10000 Pallets Cold Storage Space.
- ❷ Temperature +25° to -20° C.
- ❸ WHO GDP Compliant Facility

We would like to use this platform to...

Gently remind the Government to rely on us and join hands with the private cold chain sector for preserving the covid vaccines in this hour of need... to bring PM's vision of AatmaNirbhar live.

Reactive VS Proactive approach from the Cold Chain Industry.

Needs Collective approach from Eco System.

Its Pandemic, once in 100 Years, keep enrolling & possibility alive.

THANK YOU

